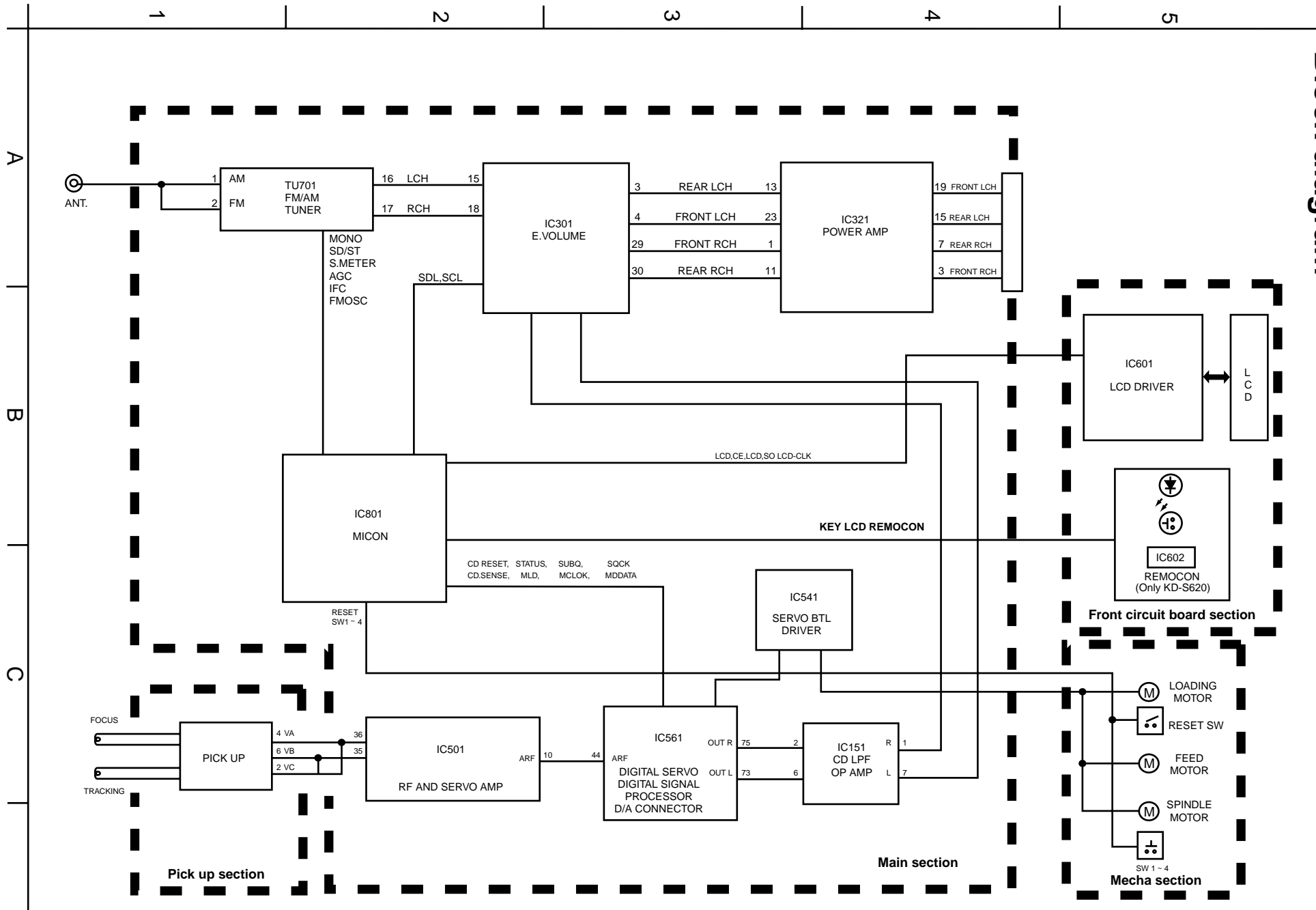


Block diagram



< M E M O >

CD servo & control section

5

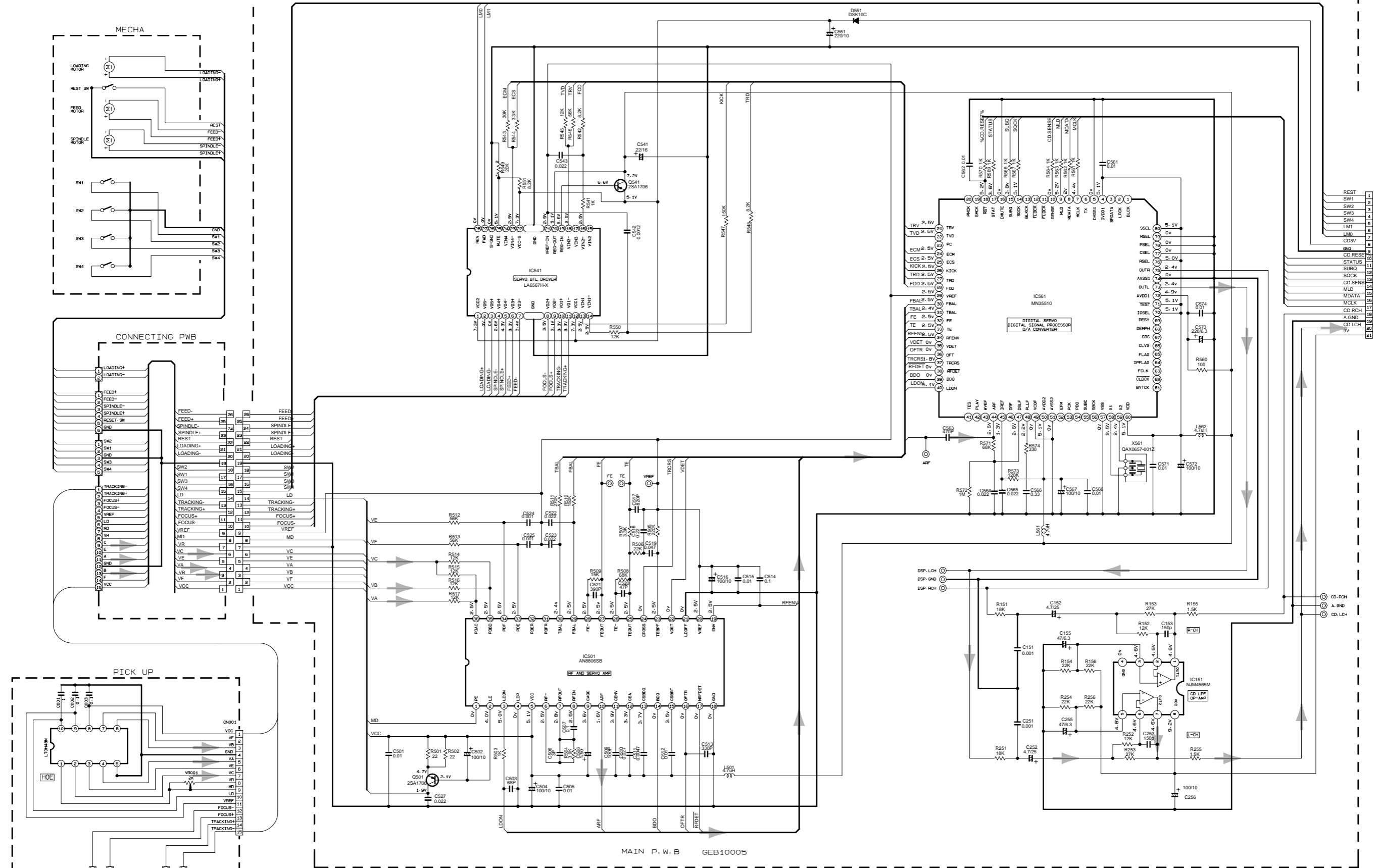
4

3

2

1

CD SECTION



REST	1
SW1	2
SW2	3
SW3	4
SW4	5
LMD	6
CDV	7
CD-RES	8
STATUS	9
SUBQ	10
SOCK	11
CD-SEN	12
MLD	13
MCLX	14
CD-RCH	15
A.GND	16
CD LCH	17
5V	18
	19
	20
	21

NOTE : VOLTAGE ARE DC-MEASURED WITH DIGITAL VOLTMETER WITHOUT INPUT SIGNAL CONDITION
 --- CD MODE

➔ CD signal

■ LCD & key control section

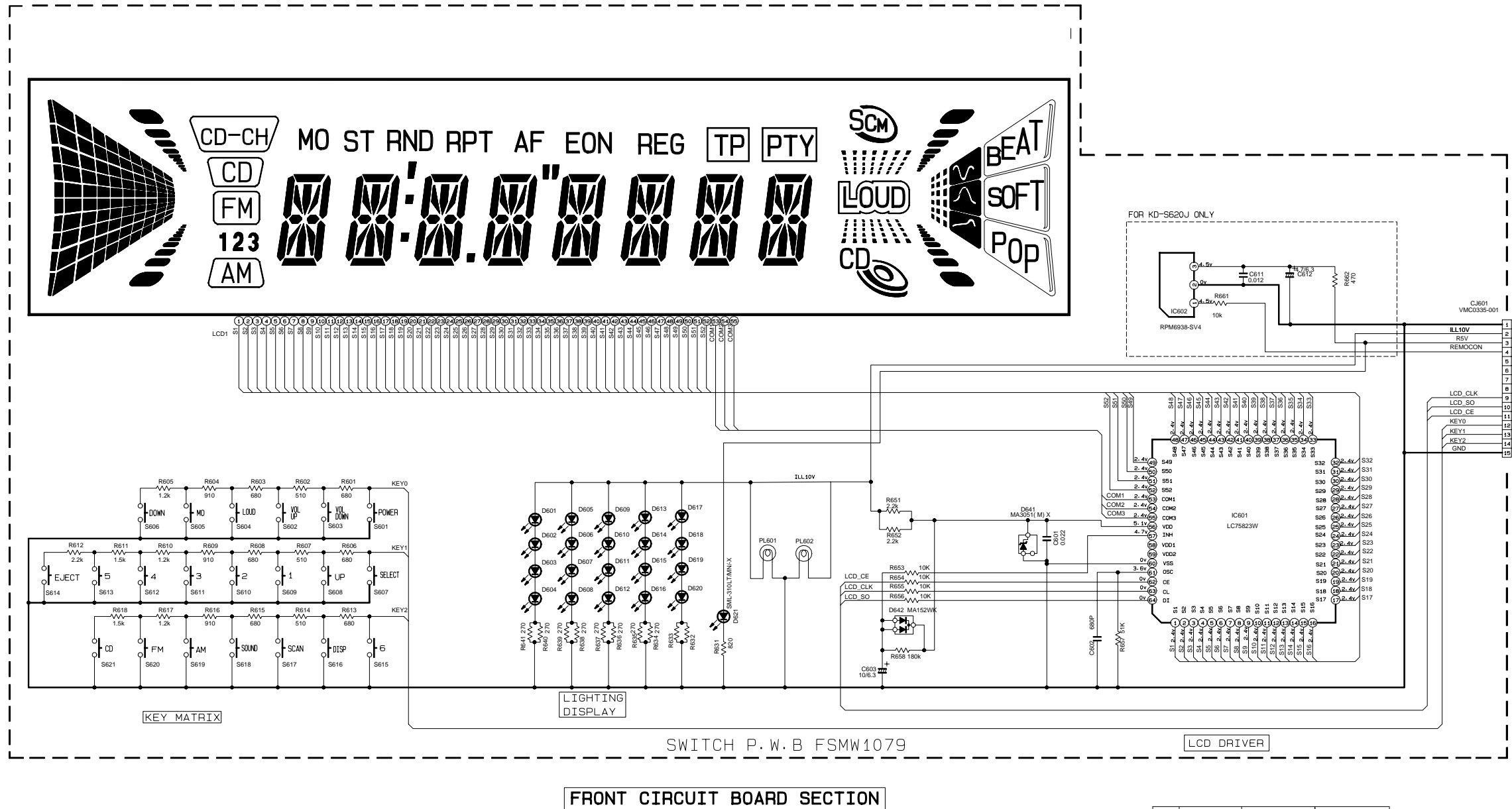
5

4

3

2

1



FRONT CIRCUIT BOARD SECTION

	KD-S620	KD-S670	KD-S675/KD-S611
PL601 PL602	QLL0033-003	QLL0033-003	QLL0056-001
D617 D618 D619	SM-310VT/JK/-X	LNJ308081/1-3/X	
R632 R633	NR8A02-J-391X	NR8A02-J-271X	
LCD1	QLD0161-001	QLD0161-001	
D601- D616	LNJ308081/1-3/X		
S601- S602	NSW0124-001X		

NOTE VOLTAGE ARE DC-MEASURED WITH DIGITAL VOLT METER WITHOUT INPUT SIGNAL CONDITION

MODEL	SWITCH BOARD
KD-S570J	KD-SWPCB-1
KD-S620J	KD-SWPCB-2
KD-S575U Series/ KD-S611E Series	KD-SWPCB-8

Note: /tr/s/jes/3165xx/3165sw.001
KD-S570J, KD-S575U, KD-S620J, KD-S611E series
FSDH3165-005SW 3/3

A

B

C

D

E

F

G

Printed circuit boards

■ Main board

■ LCD & key control board

5

4

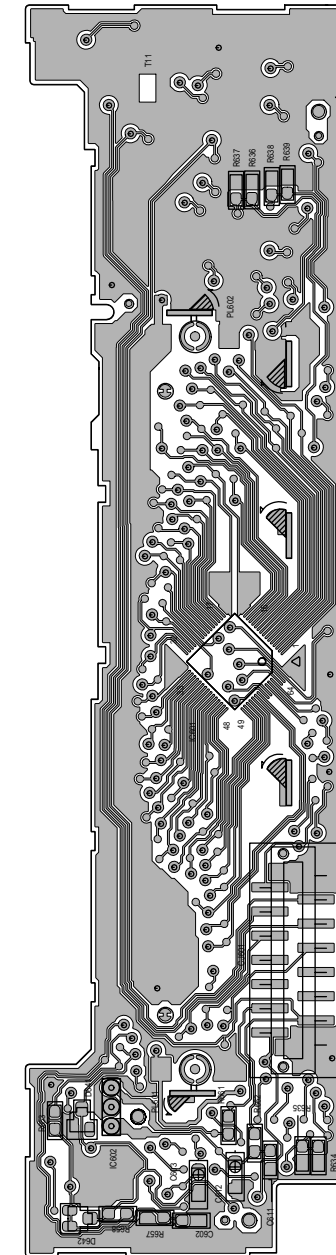
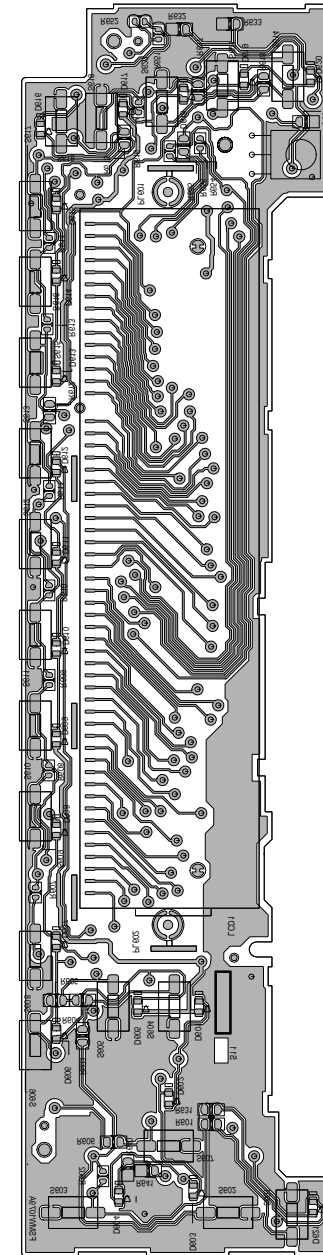
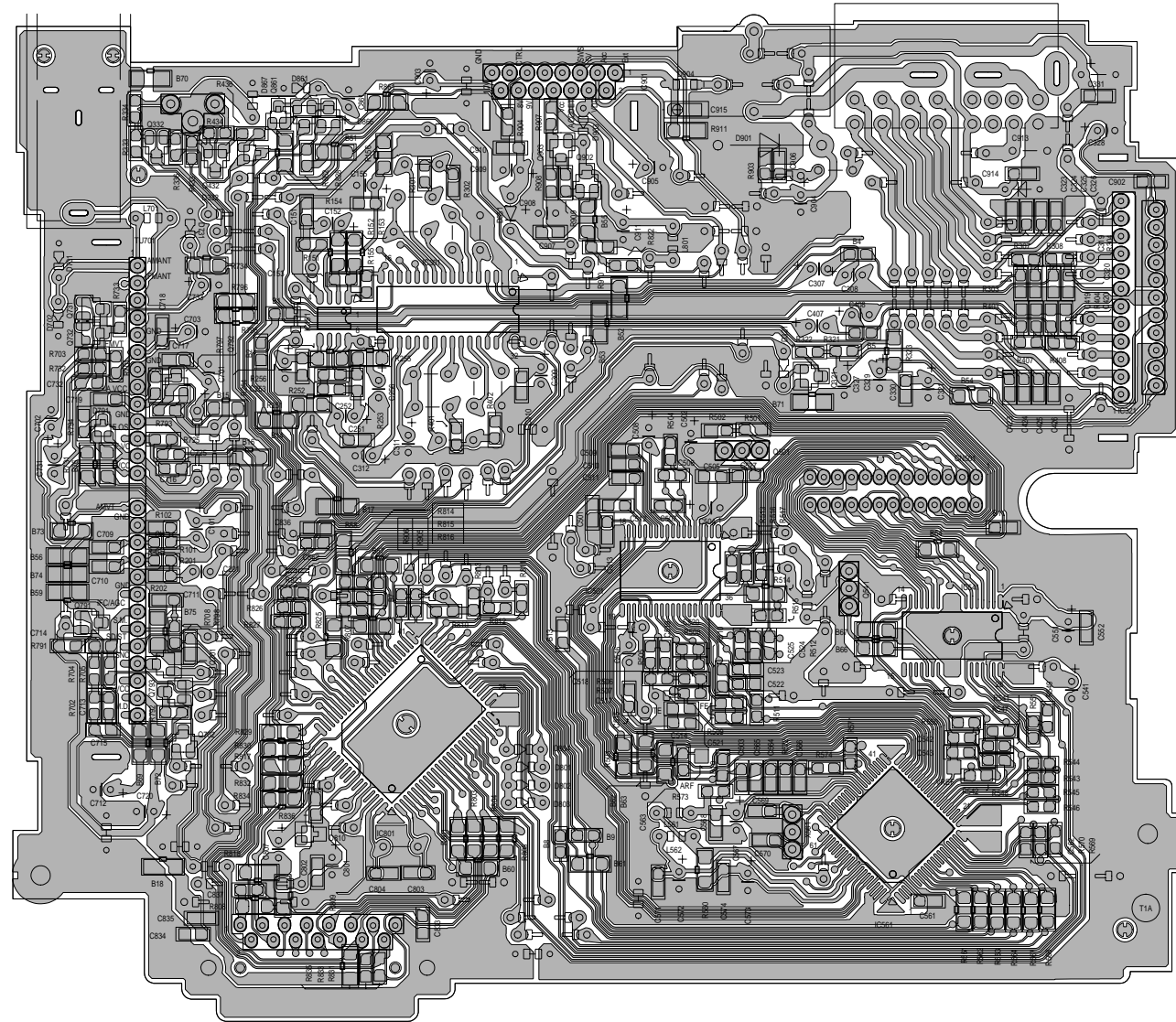
3

2

1

(Forward side)

(Reverse side)



A

B

C

2-6

D

E

F

G

H